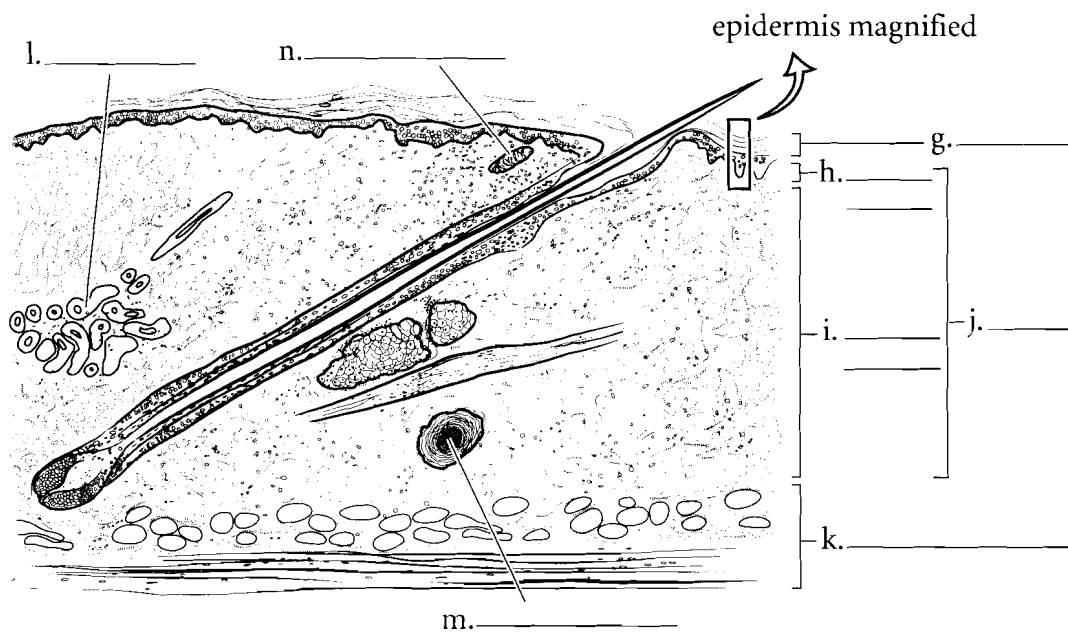
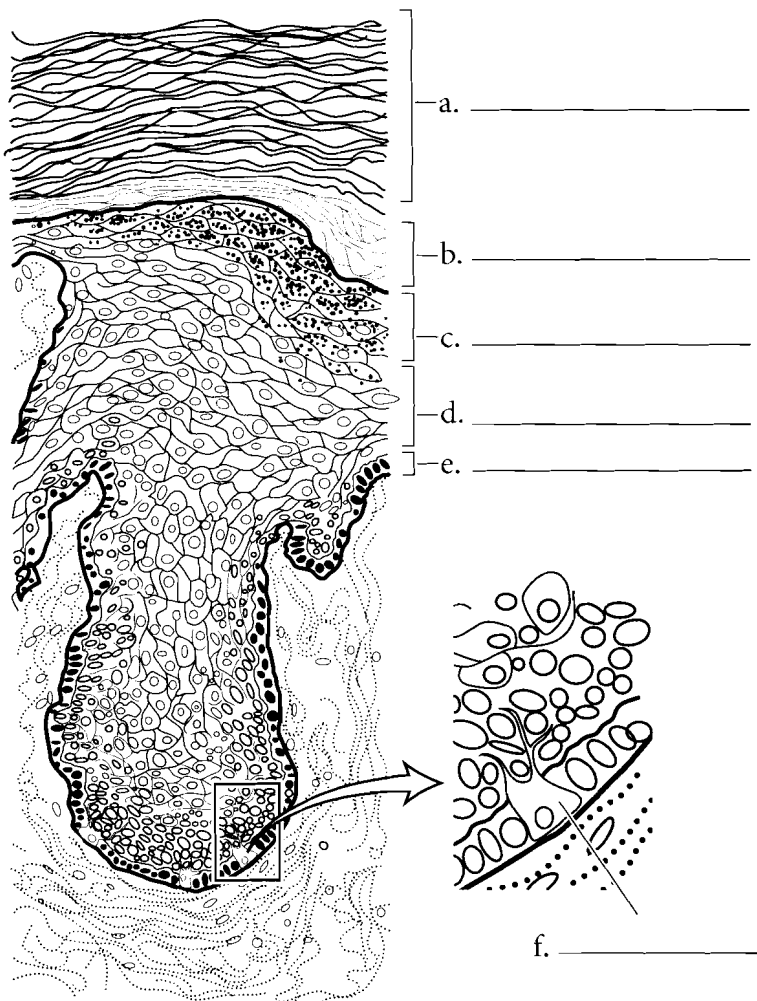


INTEGUMENTARY SYSTEM

The most superficial layer of the skin is the epidermis. Color the five layers of the epidermis. The deepest layer is the **stratum basale** and there are specific cells called **melanocytes** that secrete the brown pigment **melanin**. Color the majority of the stratum basale pink but color the melanocytes brown. Color the **stratum spinosum** a light blue. The **stratum granulosum** has purple granules in it so color that layer using purple dots. The **stratum lucidum** (found only in thick skin) is a thin, light colored layer so yellow or white are good colors for this tissue. Color the superficial **stratum corneum** orange.

The overview of the skin contains many layers. Color the **epidermis** a red-orange. The **dermis** consists of two layers, an upper **papillary layer**, which should be colored in a light pink, and a deeper **reticular layer**, which should be colored a darker pink. There are **sweat glands** that are found in the dermis that can be colored purple. You should color the **hypodermis** (not a part of the integument) yellow because of the amount of fat found there. Two types of touch receptors can easily be seen in microscopic sections. These are the **Meissner corpuscles** and the **Pacinian corpuscles**.



Answer Key: a. Stratum corneum, b. Stratum lucidum, c. Stratum granulosum, d. Stratum spinosum, e. Stratum basale, f. Melanocyte, g. Epidermis, h. Papillary layer, i. Reticular layer, j. Dermis, k. Hypodermis, l. Sweat gland, m. Pacinian corpuscle, n. Meissner corpuscle